



# Parent Meeting

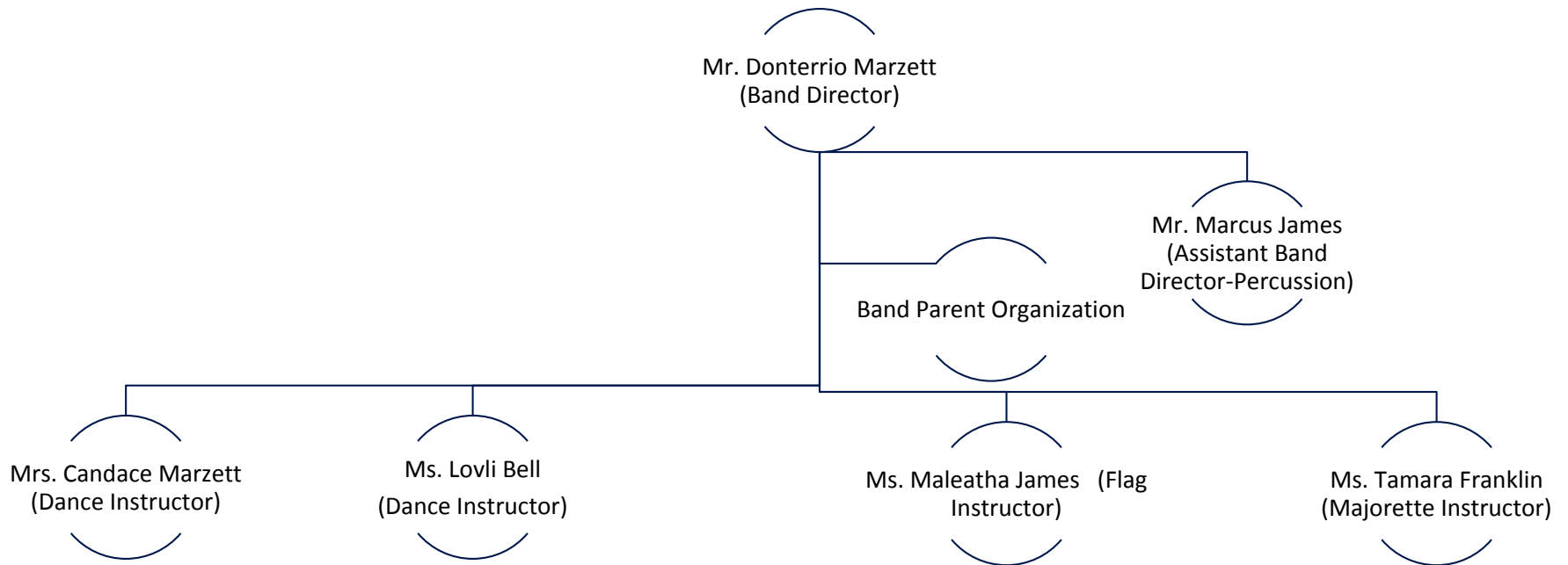
# MISSION

It is our goal that every student in the KIPP Tulsa Showtime Marching Band develops a lifelong appreciation for the value of music in his/her life. We want each and every student to become the most proficient musician and performer that he/she personally is capable of. We realize however, that some of our students will enjoy music as listeners much more often than as performers after he/she leaves our program.

We hope to instill a strong sense of self-discipline, self-motivation, and perseverance toward excellence in everything they do. Excellence is our quest; rules are the vehicle, which gives us freedom to move toward our quest. From the performance standpoint, we want them to gain the self confidence to know there is nothing they can't achieve, no obstacle they can't overcome, if they are dedicated to utilize all their talents and hard work.

Through their social relationships within the band, we want them to develop life long memories and friendships that are bonded by the adversity they will face and overcome together. Most of all, we want each student to be able to view the band as an experience of a lifetime.

# BAND PROGRAM STRUCTURE



# BAND PROGRAM STRUCTURE

- ❑ Triple Threat Flag line- Ms. Maleatha James
- ❑ Exquisite Majorettes- Ms. Tamara Franklin
- ❑ Platinum Sophistication Dance line- Mrs. Candace Marzett and Ms. Lovli Bell
- ❑ TNT HS Auxiliary - All Auxiliary Coaches
- ❑ 3D Drumline- Mr. Marcus James
- ❑ Wind Instruments and Entire Band - Mr. Donterrio Marzett

# Mr. Donterrio Marzett

- 2004 graduate of Booker T. Washington High School
  - 3-year member of the T-Connection Band.
- Student Teaching- Music
  - Star Spencer High School, Spencer, OK- Fall 2008
  - Rogers Middle School, Spencer, OK- Fall 2008
- 2009 graduate of Langston University- Bachelor's of Arts in Education-Music Education
  - 4-year member of the Langston University Marching Pride Band.
- 2012 graduate of the University of Oklahoma- Master's in Education Administration



# Mr. Marcus James

- 2008 graduate of Booker T. Washington High School
  - 4-year member of the T-Connection Band.
- Musician for Revelations Revealed Truth Evangelistic Center.
- Artist in Residence at Central and KIPP Tulsa.



# Ms. Maleatha James

- 2005 graduate of Booker T. Washington High School.
  - 4-year member of the T-Connection Band.
- 2010 graduate of the University of Oklahoma- Nursing.



# Ms. Tamara Franklin

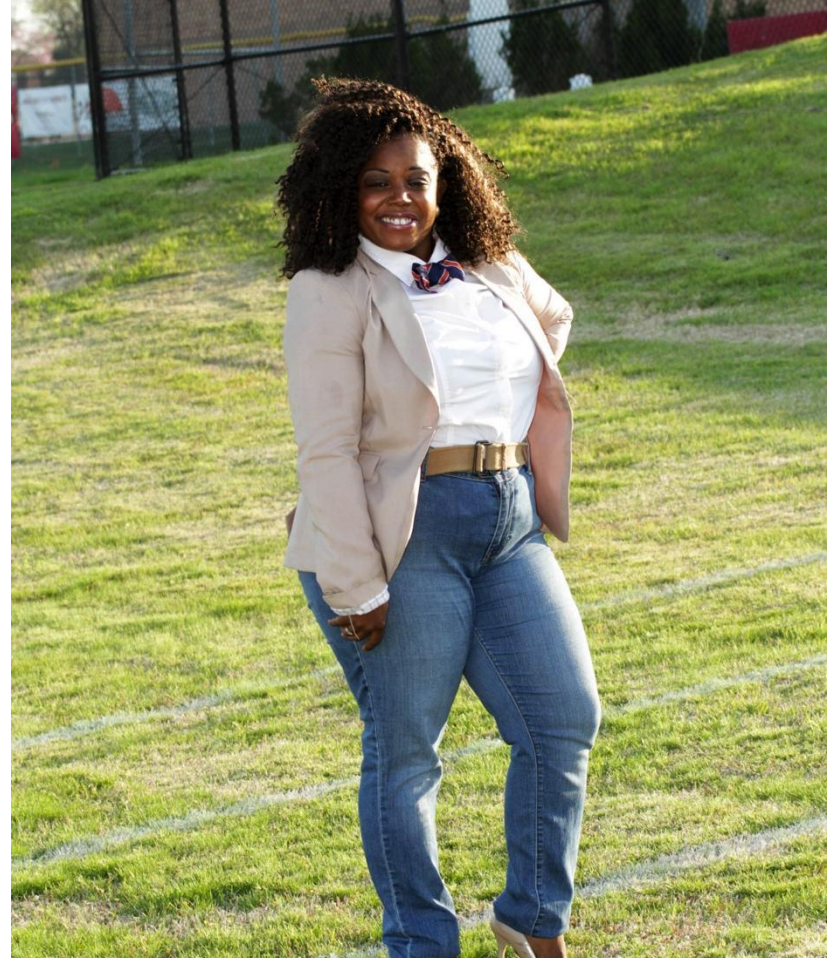
- 2003 graduate of Booker T. Washington High School.
  - 3-year member of the T-Connection Band.
- 2010 graduate of Northeastern State University- Criminal Justice.
- 2012 graduate of Northeastern State University-Master's in Criminal Justice.





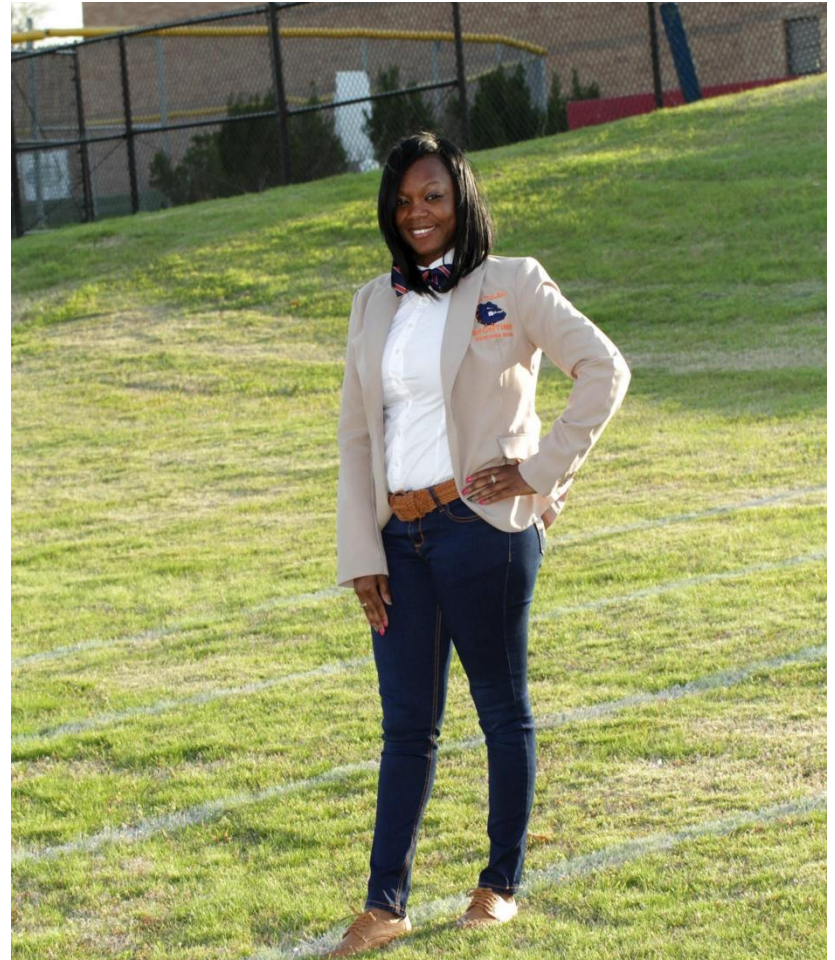
# Mrs. Candace Marzett

- 2004 graduate of McLain High School
  - 4-year member of the dance line.
  - Member of a hip-hop group called Twisted (performed in countless states and hip hop competitions)
- 2009 graduate of Langston University- Early Child Development.
  - Choreographed countless pageants.
  - 3-year member of the Langston University Marching Pride Band.
  - Performed in the Marvin Gaye play.
- 2016 graduate of Langston University- Master's in Rehabilitation Counseling



# Ms. Lovli Bell

- 2003 graduate of Tulsa Central High School
  - 2-year member of the dance line.
  - 1-year member of McLain High School Dance Line.
- Graduate of Langston University- Early Child Development.
  - 4-year member of the Langston University Marching Pride Band.



# Daily Home Screening for Students

## SECTION 1: Symptoms

1. Temperature
2. Sore Throat
3. New uncontrolled cough that causes difficulty breathing (for students students with chronic allergic/asthmatic cough, a change in their cough, a change in their cough from baseline)
4. Diarrhea, vomiting, or abdominal pain
5. New onset of severe headache, especially with a fever
6. Have you been out of the state

## SECTION 2: Close Contact/Potential Exposure

1. Had close contact (within 6 feet of an infected person for at least 15 minutes) with a person with confirmed COVID-19
2. Traveled to or lived in an area where the local, Tribal, territorial, or state health department is reporting large numbers of COVID-19 cases as described in the [Community Mitigation Framework](#)
3. Live in areas of high community transmission (as described in the Community Mitigation Framework)

# COVID Safety Guidelines

- ◆ Check In: Questionnaire daily on website [www.kiptulsashowtime.com](http://www.kiptulsashowtime.com)
- ◆ Temperature Checks every practice
- ◆ Must bring own masks and water
- ◆ Wash masks and have a few in rotation
- ◆ Adhere to social distancing while at practice
- ◆ Wash in and out/wipes or sanitize
- ◆ If a student contracts COVID-19 within the band, we will determine if the section or band needs to quarantine based on exposure

# Items to Bring to Practice

1. Check In: Questionnaire daily on website
2. Masks - Make sure you have several masks to rotate through
3. Water Bottle - Bring your own water bottle
4. Adhere to social distancing while at practice
5. Wash in and out/wipes or sanitize
6. If a student contracts COVID-19 within the band, we will determine if the section or band needs to quarantine based on exposure

# DISCIPLINE

- Our form of discipline is to condition for what we do.
- Discipline is training.
- We do calisthenics ( push-ups, sit-ups, running, kicking, marching, arm rotations, etc.)
- What we do prepares them to be outstanding performers and to have endurance out of this world.

# INSTRUMENT CARE

- Please take good care of the instruments.
- You are responsible for the instruments that you check out as you are the only one using it.
- Students will be taught how to carefully care for the instruments, however, they will be responsible for the maintenance.

# SCHOOL EXPECTATIONS

- Grades
  - Aim for a C or better
  - Weekly grade checks will occur
- Behavior- we will be in contact with your school regarding your behavior. You will be held accountable if your behavior does not meet band expectations.



# BAND REHEARSAL- *Rehearsal*

- Rehearse is what we do together. Practice is what you do at home.
  - **Practicing – 100%**
  - **Stay in your practice area.**
  - **Scheduled Breaks**

# BAND REHEARSAL- *Rehearsal*

- No people outside of band should be at practice. **Parents (ONLY) are welcome, however, you will need to stay in your cars. All tardies and absences should be communicated with the coach by the parent.**
- You will be held accountable regarding negative behavior through but not limited to calisthenics, suspension, or expulsion from the band.
- Horse playing is not allowed during practice.
- Please eat before practice and not during practice.

# BAND REHEARSAL-Attire

- Practice attire will include ONLY
- Bottoms should be something you can move around in (preferably blue band shorts)
- Shirts should be plain or can be a KIPP shirt. (preferably orange or navy band shirt).
- Tennis shoes (NO Converse/Sperry/Toms/Jordan/Slides)

You will be dismissed from practice if you do not adhere to attire!

# BAND PERFORMANCE-Attire

- Students will receive their band shirt and shorts for free this year.
- Students should purchase some all white shoes for performances this year. Style or brand does not matter. Just be comfortable.

There may be other items, however, we will let you know later.

# BAND REHEARSAL- *Attendance*

- Attendance is MANDATORY
- Attendance the day before a performance is MANDATORY
- Tardies- tardies add to absences. 2 tardies is an absence.
- Absences- All absences should be cleared with the coach by the parent BEFORE. 2 unexcused absences= ineligible to perform

# DEADLINES

- Money
  - We are trying to keep everything at a low cost this year as much as possible.
  - Band Dues are as follows...
    - \$60 per person
    - \$100 for 2 siblings
    - \$150 for 3 siblings
    - Band Dues are due December 1st.
  - Deadlines are deadlines. We try our best to work with you but you need to respect our deadlines.

# Payment

- ❑ Cash - Make sure to get a receipt.
- ❑ Check - Make sure to get a receipt.
  - ❑ Make payable to KIPP Tulsa Band
- ❑ Cash App: \$showtimeband
- ❑ Square:  
<https://checkout.square.site/pay/b0af0d4b-a984-4482-9275-04c946c5038b>



# Fundraisers

## **Blue and Gold Sausage**

Orders due on October 29th

Deliver the week of November 9th

Orders due on November 19th

Deliver the week of December 7th

Blue and Gold Order Form - Keep for your records

Blue and Gold Summary Form - Turn in with your money



# PARENTS

- Please respect coaches and directors. We are here for your child's best interest. We are not here to argue with you, we are here to work with you and your child. If requests are not respected, you can respectfully withdraw your child.
- Your money is not a guarantee for your child to perform. You must encourage your child to practice and meet all expectations.
- Attend band parent meetings, be active, and present new ideas.

# UNIFORMS



- A performance is similar to a play. We are in costume, putting on a presentation.
- We work together to be uniformed from head to toe.

DO'S AND

DON'T



# SOCIAL MEDIA

---

- Now that you are apart of our organization; we would like to remain in a positive light....

The things you post effect  
**EVERYONE!!!**

# PLEASE Do...

Take Respectful Pictures:

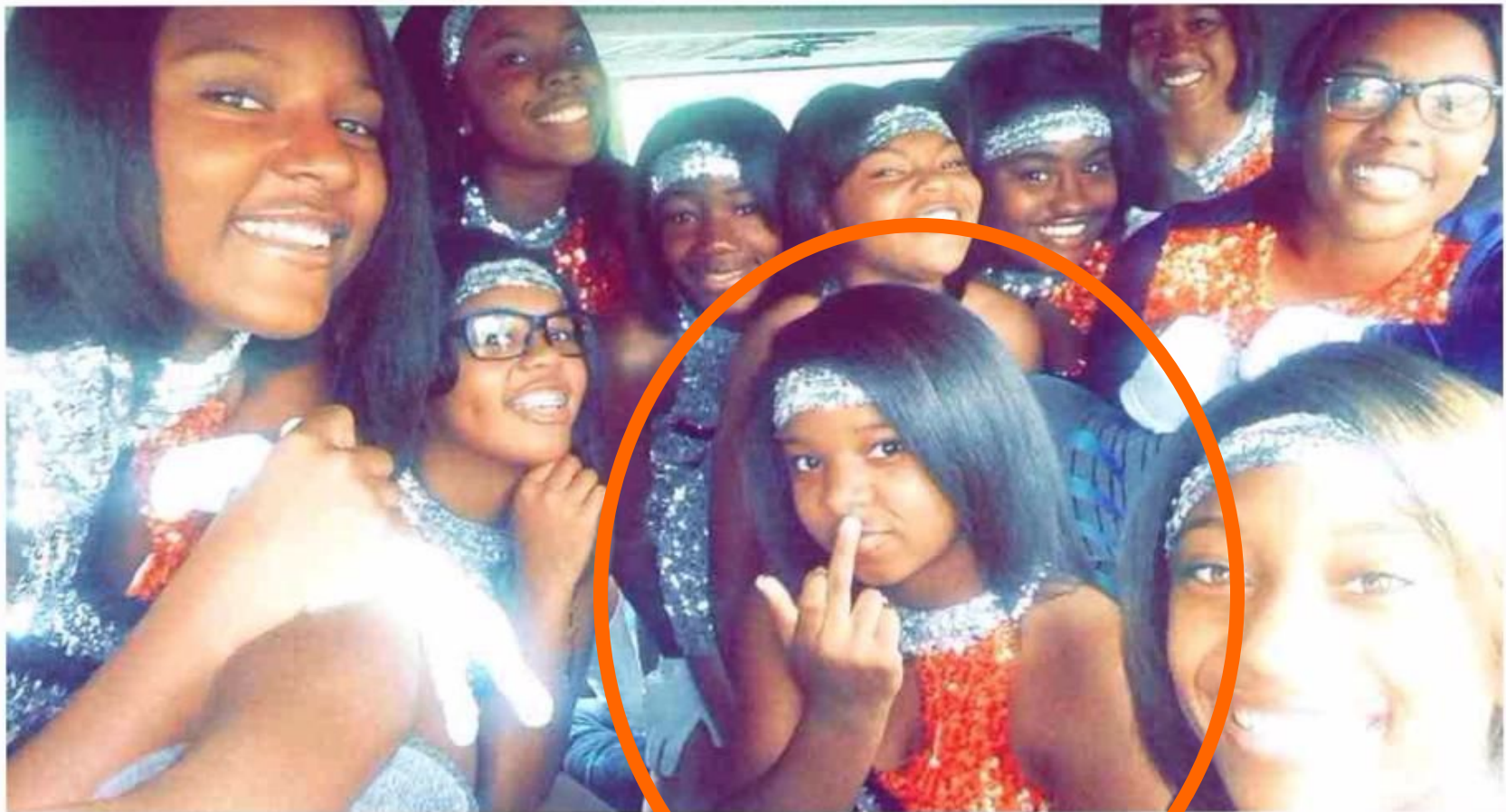




We are all Family!

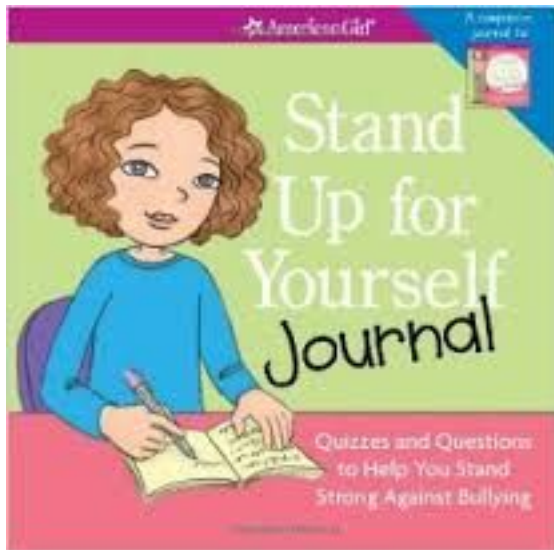
MUST Do!!!!

# ABSOLUTELY DON'T.....



# Do...

- Speak up for yourself and advocate!





# WHY?...



"Uncoachable kids  
become  
unemployable  
adults.  
Let your kids get  
used to someone  
being tough on them.  
It's life, get over it."

-Patrick Murphy  
Alabama Softball

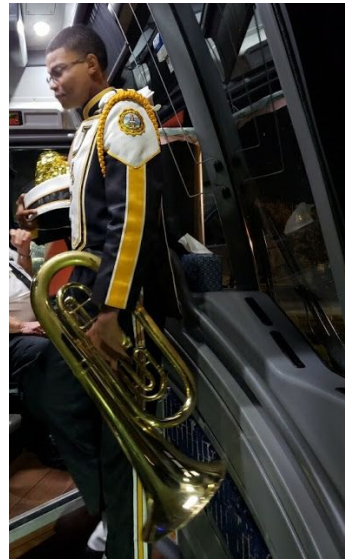
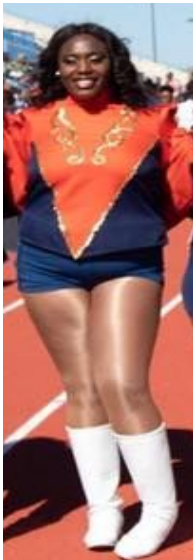
# HARD WORK PAYS OFF!

*That which does  
not kill us makes  
us stronger.*

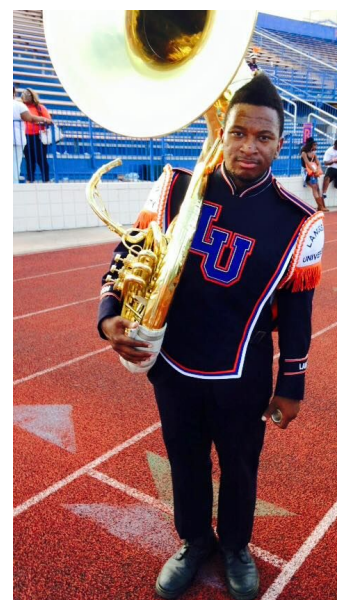
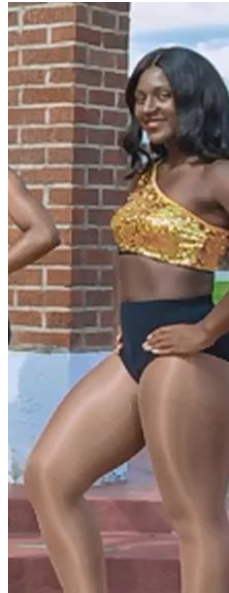
**- Friedrich Nietzsche**



# COLLEGE BAND STUDENTS



# COLLEGE BAND STUDENTS



**And Many More!**

# CONTACT INFORMATION

- Email:  
dmarzett@kipptulsa.org
- Cell Phone:  
918-280-9344
- Team App - Information  
will given in person

**SHOWTIME MARCHING BAND**

**NOW HAS ITS OWN APP**



Download our awesome new app now and stay up to date with all the latest information!

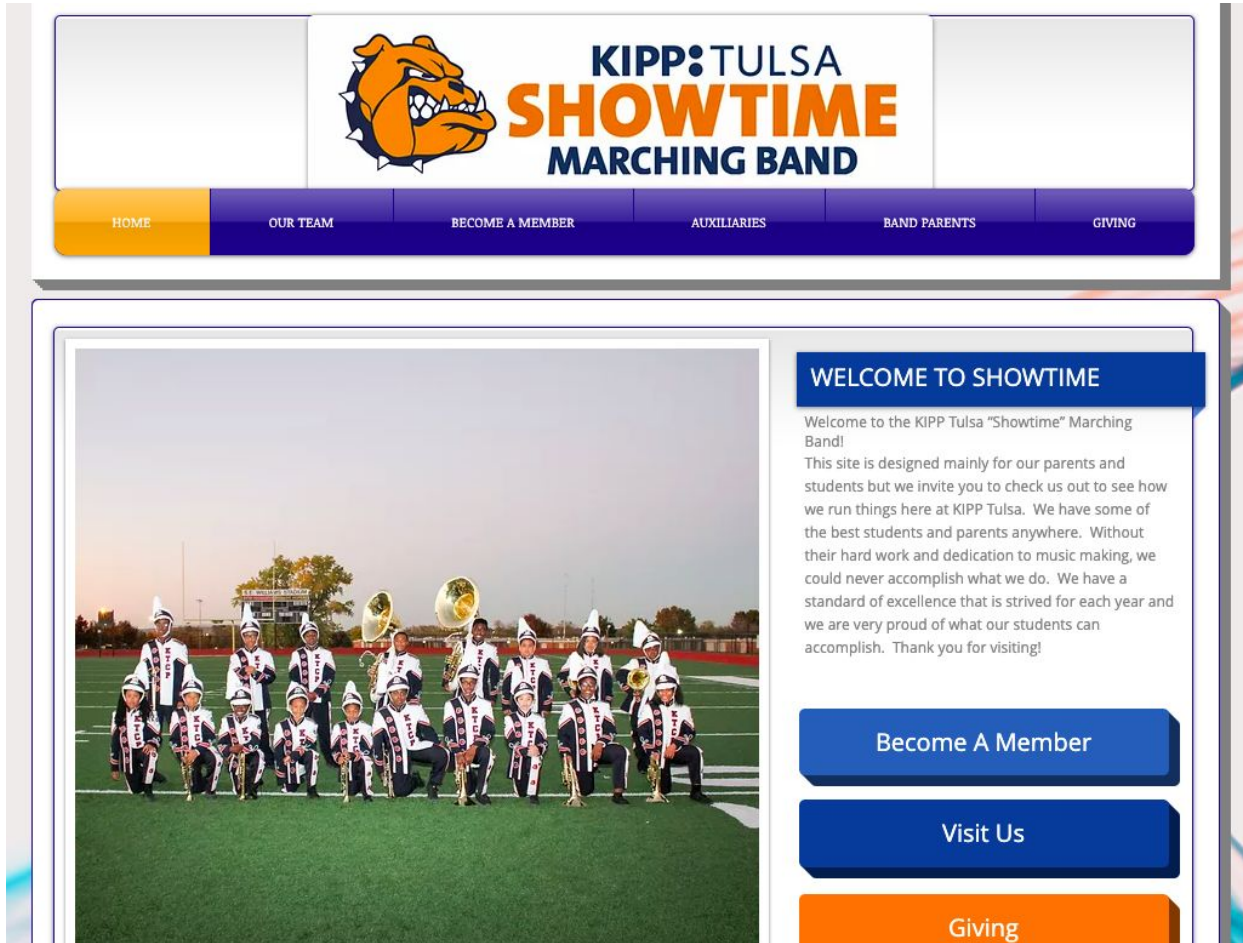
Install the Showtime Marching Band App on your smartphone or tablet now!

**Follow these steps:**

1. Download Team App from the Apple or Google Play app store.
-  
2. Sign up to Team App. You will be sent an email to confirm your registration.
  3. Log into the App and search for "Showtime Marching Band".
  4. Choose your applicable access group(s).
  5. If you don't have a smartphone go to [showtimemarchingband.teamapp.com](http://showtimemarchingband.teamapp.com) to sign up and view this App online.



# WEBSITE INFORMATION



The screenshot displays the homepage of the KIPP Tulsa Showtime Marching Band website. At the top, there is a navigation bar with a white background and a dark blue header. On the left of the header is a bulldog logo. To its right, the text reads "KIPP:TULSA SHOWTIME MARCHING BAND" in blue and orange. Below the header is a dark blue navigation menu with white text for "HOME", "OUR TEAM", "BECOME A MEMBER", "AUXILIARIES", "BAND PARENTS", and "GIVING". The "HOME" button is highlighted in orange. The main content area features a large photograph of the marching band on a field. To the right of the photo is a blue box with the heading "WELCOME TO SHOWTIME" and a paragraph of text. Below the text are three buttons: "Become A Member" (blue), "Visit Us" (blue), and "Giving" (orange).

## KIPP:TULSA SHOWTIME MARCHING BAND

HOME OUR TEAM BECOME A MEMBER AUXILIARIES BAND PARENTS GIVING

### WELCOME TO SHOWTIME

Welcome to the KIPP Tulsa "Showtime" Marching Band!

This site is designed mainly for our parents and students but we invite you to check us out to see how we run things here at KIPP Tulsa. We have some of the best students and parents anywhere. Without their hard work and dedication to music making, we could never accomplish what we do. We have a standard of excellence that is strived for each year and we are very proud of what our students can accomplish. Thank you for visiting!

[Become A Member](#)

[Visit Us](#)

[Giving](#)

[www.kipptulsashowtime.com](http://www.kipptulsashowtime.com)



**THANK YOU FOR YOUR TIME**

*Showtime Marching Band*